

PRINCIPAL PARTICULARS

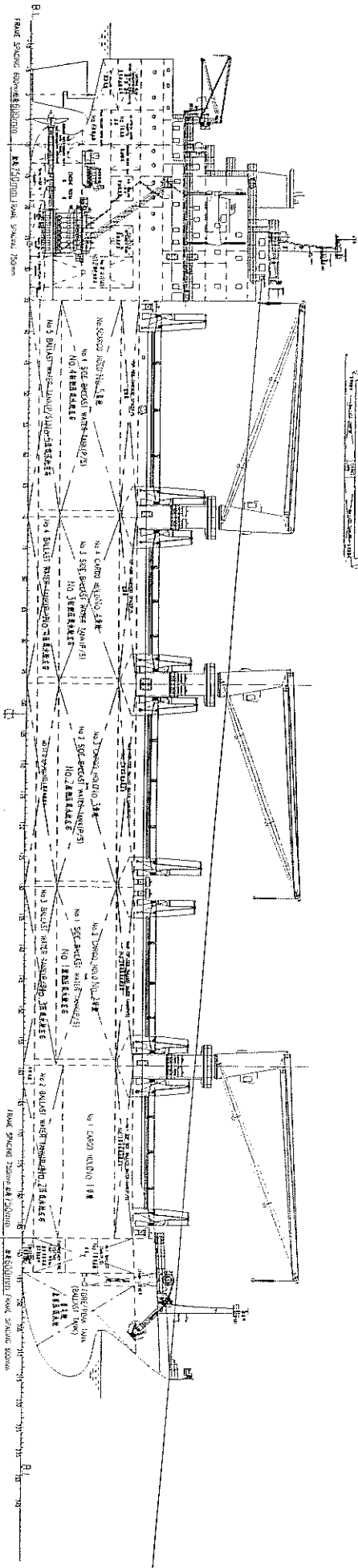
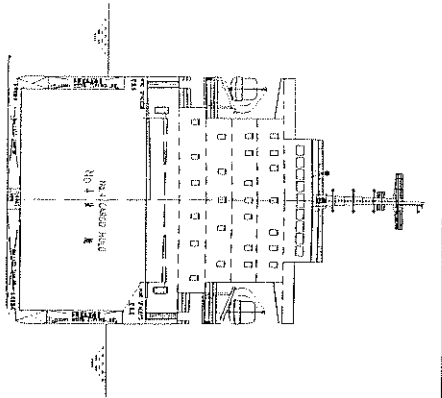
LENGTH 92  
 LENGTH BP 159.90m  
 BREADTH 24.0m  
 BREADTH moulded 149.80m  
 DEPTH moulded 13.5m  
 DEPTH draft moulded 11.5m  
 DEPTH draft 9.5m  
 MAIN DEPTH 22000  
 SALES POWER 44000kW  
 STEERAGE 5180kW

SALES REVOLUTION 17.5rpm  
 SERVICE SPEED 13.5kn  
 COMPLEMENT 10 P  
 MANOEUVER AREA

UNRESTRICTED SERVICE  
 17.5rpm  
 13.5kn  
 10 P

CLASSIFICATION NOTATION

R2A, Bulk Carrier,  
 Strengthened for Heavy Cargo,  
 holds No 2 and No 4 may be empty  
 CCS

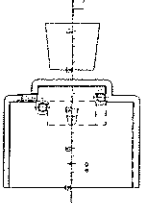
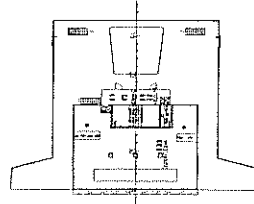
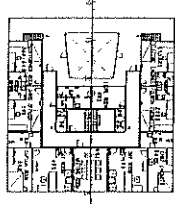
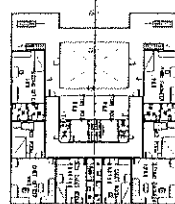
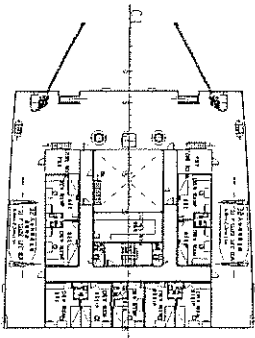


DECK DECK 甲板

CREW DECK 船员甲板

CAPTAIN DECK 船长甲板

WHEELHOUSE DECK 驾驶室甲板



COMPASS DECK 罗经甲板

1:1000

DESIGNED BY	DATE	2008.08.08	TECHNICAL DESIGN
CHECKED BY	DATE		
DATE OF STD			
SCALE			
PROJECT NO.			
DESIGNER			
APPROVED			
DATE			
DRAWING NO.		JP-420-020-03B	
PROJECT WEIGHT SCALE		1:1000	
TECHNICAL DESIGN			
TECHNICAL DESIGN			